
Configuration Manager

The think3 application Configuration Manager is a managing tool that helps you to save and restore the program configuration. It allows centralized management of thinkdesign configuration settings in companies with several installations of thinkdesign. It also allows individual users to create and manage different configurations spanning different thinkdesign versions and also enables export and import of specific configurations between computers. In this web tutorial we will learn how to work with this new tool.

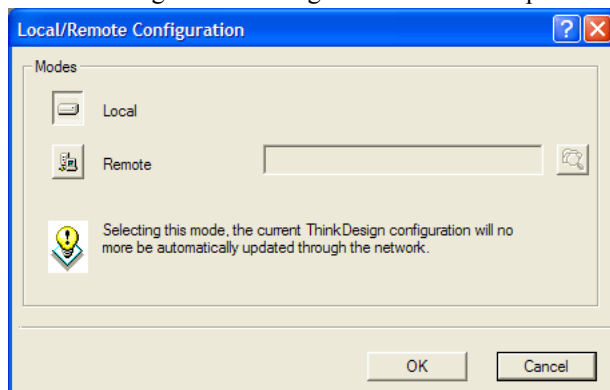
Table of Contents

1. Exercise 1 : Centralized settings.	1
2. Exercise 2 : Copy configurations.	3
3. Exercise 3 : Keep configuration over different thinkdesign versions.	5
4. Exercise 4 : Manage different configurations.	6

1. Exercise 1 : Centralized settings.

Configuration Manager allows a centralized management of the think3 application configuration settings. If a think3 application administrator creates a configuration, other machines can upgrade during the program startup, automatically using the remote(Server-Client) configuration behaviour.

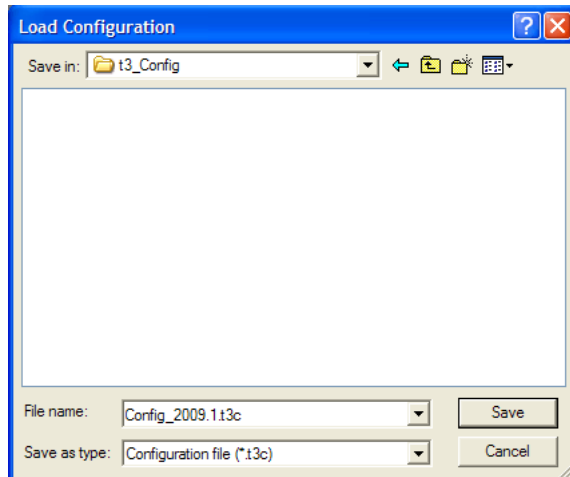
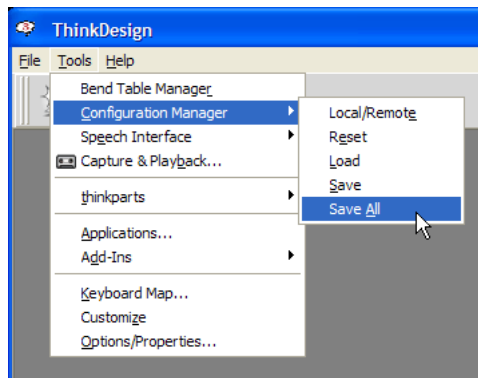
On the Server machine set Modes to LOCAL status. You can Invoke the Configuration Manager command from Tools - Configuration Manager when no file is open.



Save All the configurations as Config_2009.1 in a shared folder say C:\t3_Config. The following files are created,

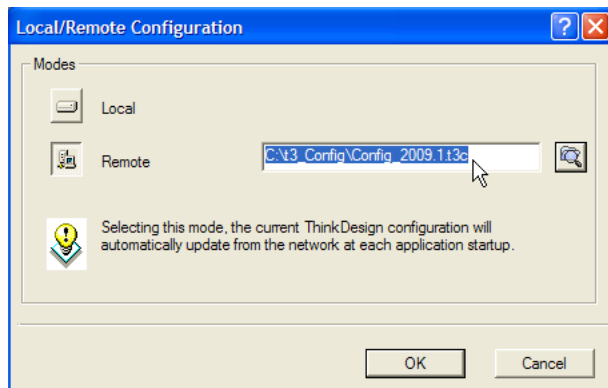
C:\t3_Config\Config_2009.1

C:\t3_Config\Config_2009.1.t3c



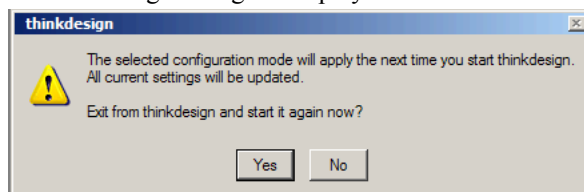
On the client PC:

- Set Mode to Remote



and browse and select the the configuration file Config_2009.1.t3c located on the Server.

The following message is displayed.

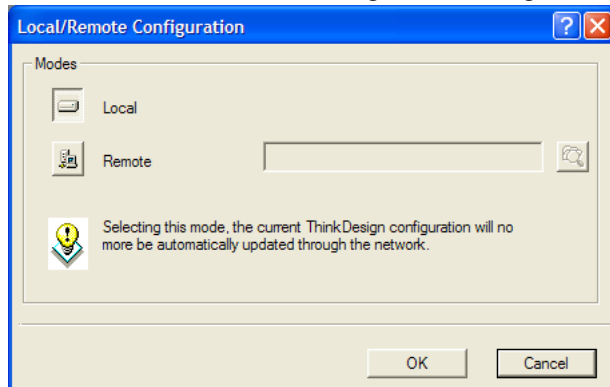


You have to restart thinkdesign to activate the new configuration. Now, every time thinkdesign starts on the client, this configuration file is loaded from the server.

2. Exercise 2 : Copy configurations.

In this step we will see how we can copy a configuration between machines, say you are moving from an Old machine to a New machine.

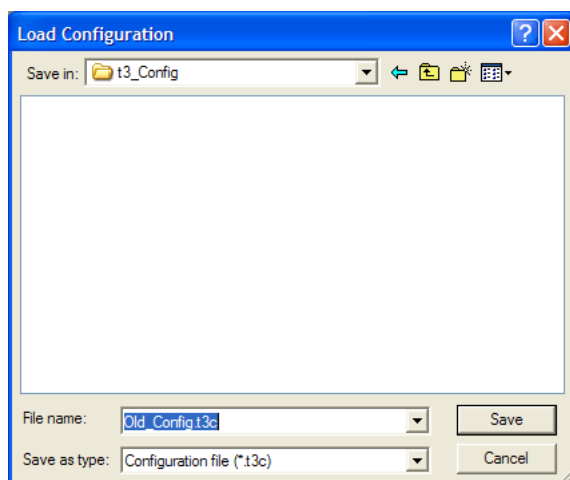
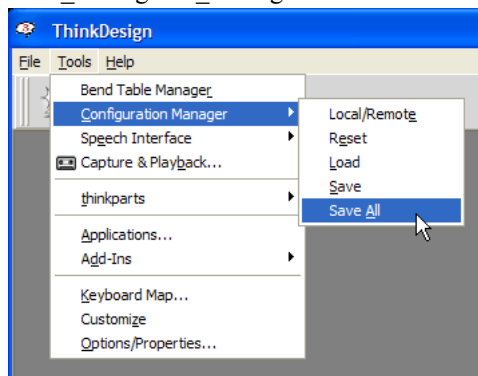
- On the Old machine set Configuration Manager Mode to Local.



- Save All** the configuration as Old_Config in a folder for example C:\t3_Config. The following files are created.

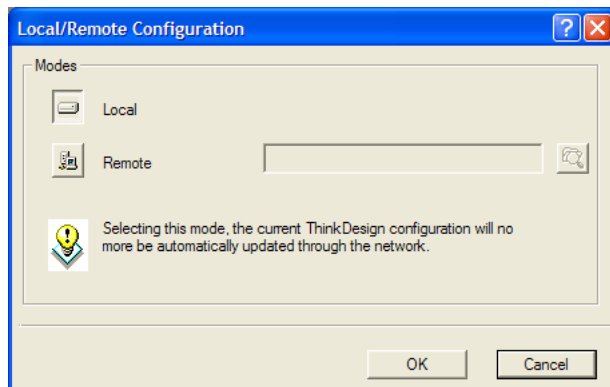
C:\t3_Config\Old_Config

C:\t3_Config\Old_Config\t3c

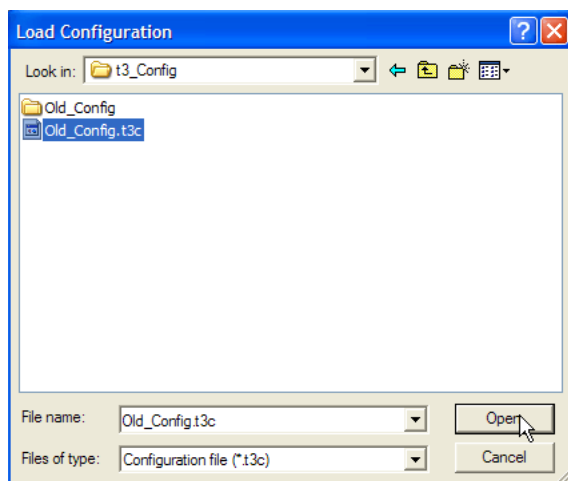
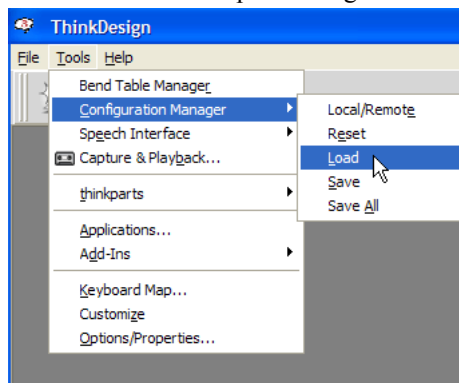


On the new machine:

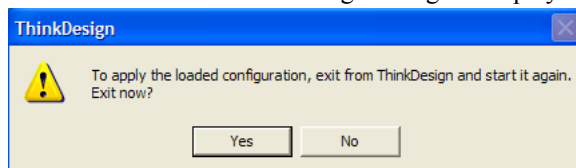
- Copy the file Old_Config.t3c and the folder Old_Config from the Old pc to the New one.
- On the New machine set modes to LOCAL.



- Now **Load** the copied configuration Old_Config.



After the selection the following message is displayed.

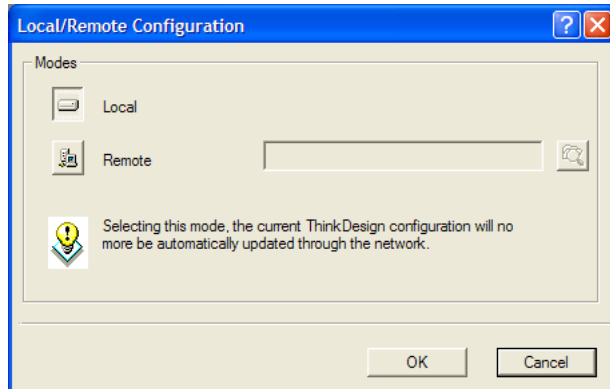


To activate the new configuration you have to restart thinkdesign.

3. Exercise 3 : Keep configuration over different thinkdesign versions.

In this step let us learn how to retain Configurations between installations of different versions of thinkdesign. Assume the thinkDesign Version you are working with is 2007.1.

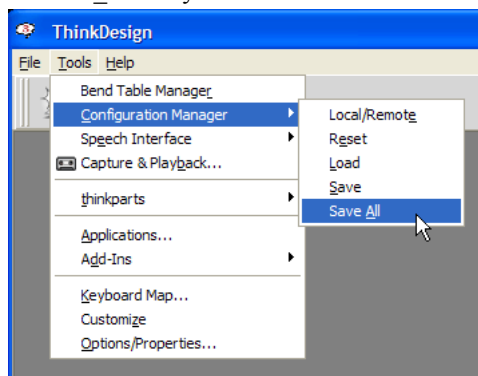
- Set Configuration Manager Mode to LOCAL.



- Save All** the configurations as myconf1 in a shared folder C:\main_conf. The following files are created.

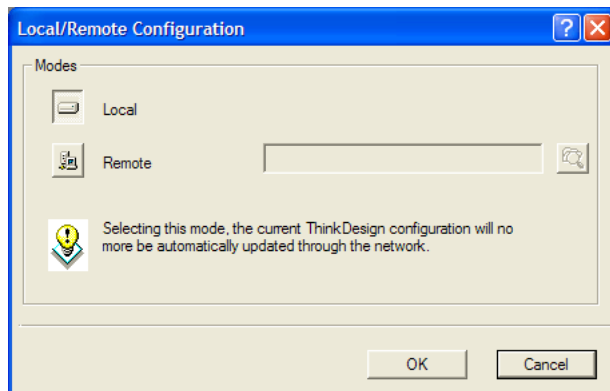
C:\main_conf\myconf.t3c

C:\main_conf\myconf

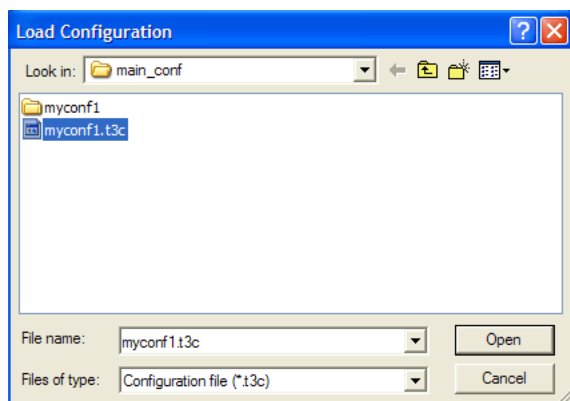
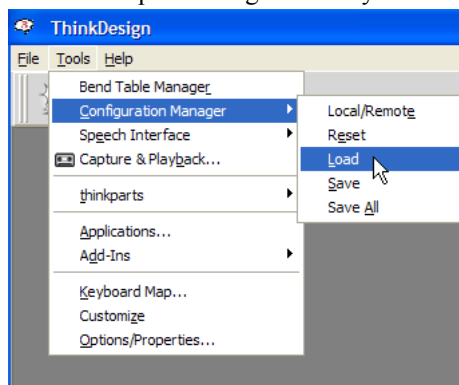


Install the new version, say rev 2009.1.

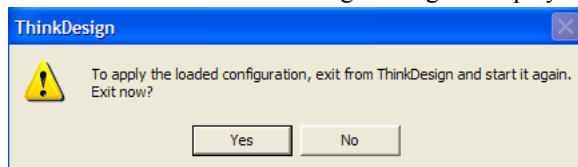
- On the new version (2009.1) set Modes to LOCAL.



Load the copied configuration myconf.



After the selection the following message is displayed.



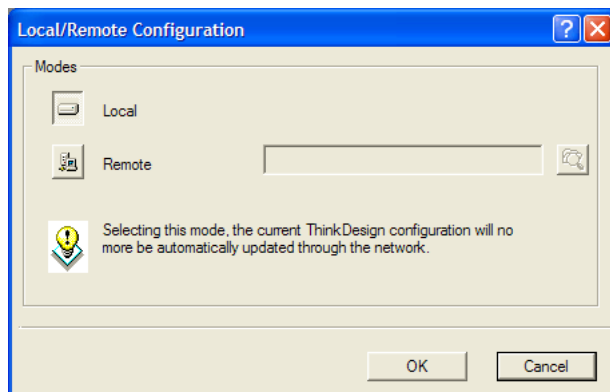
To activate the new configuration you have to restart thinkdesign.

4. Exercise 4 : Manage different configurations.

In this step we will learn how to create and manage two different configuration with two different customized style settings. Let's call the two configurations as myconf1 and myconf2.

To begin with create a style for configuration myconf1.

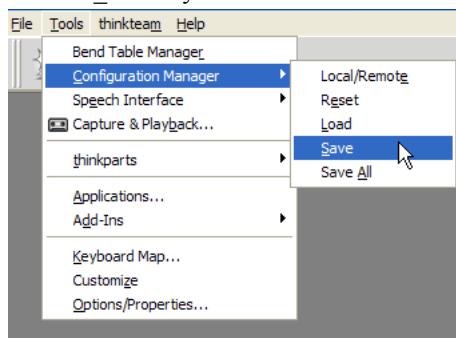
- Set Modes to LOCAL.



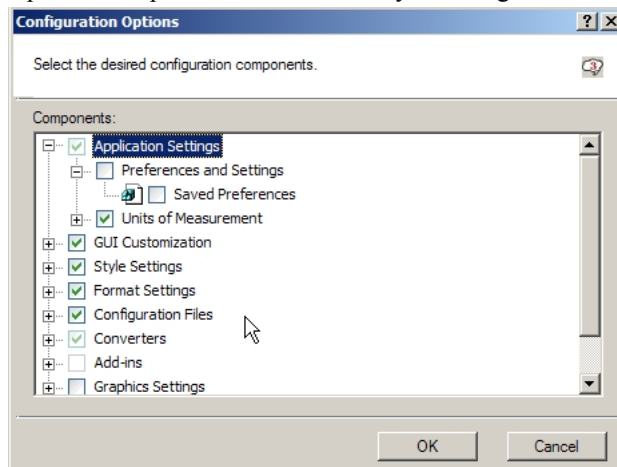
Save Configuration as myconf1 in folder C:\main_conf. The following files are created.

C:\main_conf\myconf1.t3c

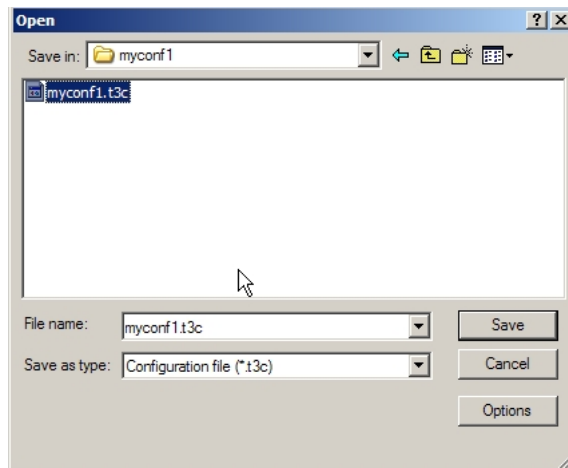
C:\main_conf\myconf1



Open Save Options and select the Style Settings



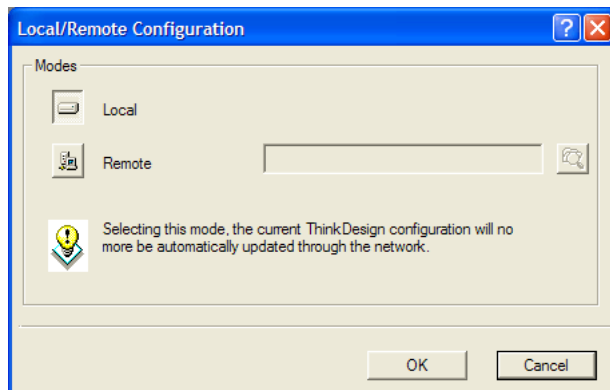
and **Save Configuration** myconf1.



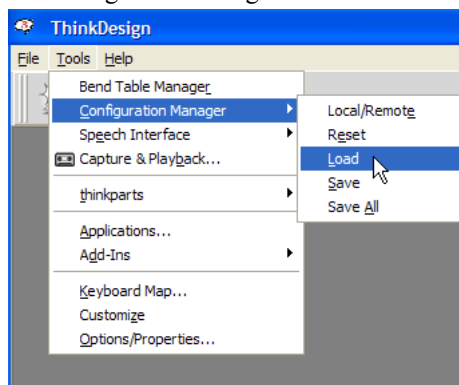
Now create a different style for configuration myconf2 and save the Style settings as you did for myconf1.

Now on the pc it's possible to load one of the two configuration :

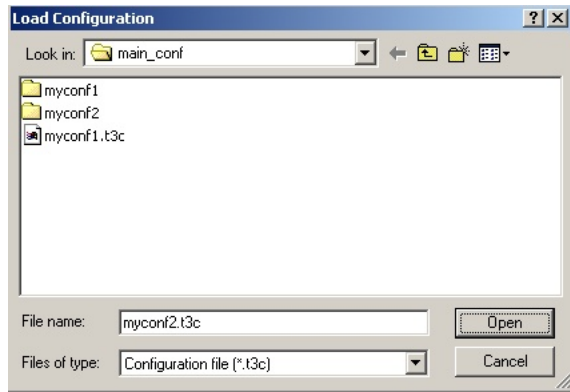
- Set Mode to LOCAL.



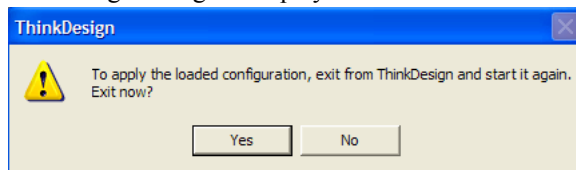
then using **Load** configuration



you can select the configuration of your choice, for example myconf2



A warning message is displayed.

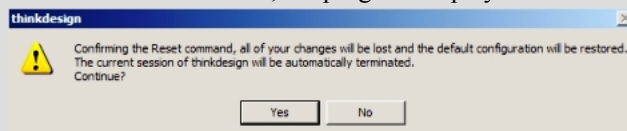


To activate the new configuration you have to restart thinkdesign.

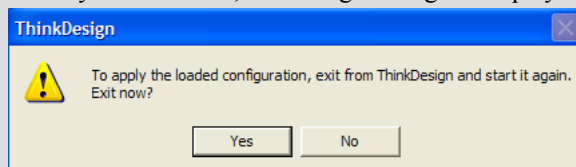
Configuration Manager - Reset.

Starting from Version 2008.1, A new Reset command has been added to the existing list of Configuration Manager commands. This new command enables you to restore the default configuration of the application, thereby losing all the changes that have been made to the current configuration. The default configuration is a snapshot of the application settings done after the installation at the first run time of the application.

It is important to note that the reset operation will have effect only when you restart the application. When you start the Reset command, the program displays the following pop-up dialog box with a warning message:



When you select Yes, a warning message is displayed, as shown in the following image:



When you click Yes, the program first resets the current configuration and then applies the loaded new configuration on re-starting the application. Here the Reset functionality allows you to realize the switch occurring from the current to the loaded configuration.